



Jain Institute of Technology

(Affiliated to VTU, Belagavi)

Approved by AICTE, New Delhi, and State Govt. DTE

TRAINING AND PLACEMENT CELL

BROCHURE – 2022-23

About JIT

Jain Institute of Technology is one of the best-developing engineering colleges of Davangere and is located adjacent to the Pune-Bangalore National Highway, which is 7 Kms from Davangere Railway Station. It has a lush green campus spread across 16 Acres of land, attached to lake-The college has excellent infrastructural facilities that include spacious classrooms attached with tutorial rooms & well-equipped laboratories, Workshops, Drawing halls, Seminar halls, Digital library, Staff rooms, Computer center, Browsing center with high speed internet connectivity, Girls common room, Boys common room, EDUSAT room, Canteen, Transportation and reprographic facility to the students etc. The college has a team of well-experienced, dedicated faculty & strong student counseling system in which each student will be attended to individually with special care in academics and other co-curricular activities.

About Training and Placement Cell

Training and Placement Cell is an integral part of our Institute. Training activities are organized throughout the year to prepare the students for the campus selection process. The cell is sensitized to function throughout the year towards generating placement and training opportunities for the Students.

The Placement Cell is headed by the Dean of Training & Placement and has a team of Placement coordinators from each department, well supported by the Placement trainers.

The Placement Cell aims to bridge the gap between academia and industry. We focus on industry-academic interface programs in collaboration with leading industries in various sectors. Jain Institute of Technology proudly boasts of providing our students with a wide range of Campus Recruitment Training programs aimed at enhancing their life skills, soft skills, employability skills, personality development, technical skills, out-of-the-box thinking, creativity, and innovativeness. The placement cell also initiates many curricular and extra-curricular activities to ignite their minds. Also, various career-orientating seminars and workshops are conducted, ultimately leading to campus placements. We make sure, the students imbibe the right attitude and skills to face the challenges in the work culture.

Placement Policy

Eligibility Criteria

Students must meet minimum academic requirements and any additional criteria set by the recruiting organization.

Participation Guidelines

All eligible students are encouraged to participate in placement activities.

Students must register with the placement cell and comply with all deadlines and procedures.

Preparation and Training

The institute provides career counseling, resume-building workshops, mock interviews, and other training programs to prepare students for placement activities.

Placement Process

Companies interested in recruiting from the institute will be invited to conduct placement drives on campus.

The placement cell facilitates communication between students and recruiters, schedules interviews, and manages logistics.

Interviews and Selection

Students are required to attend all interviews for which they are shortlisted.

Selection criteria may vary by company and position, and final decisions are at the discretion of the recruiters.

Acceptance of Job Offers

Students are expected to accept job offers responsibly and communicate their decisions promptly to both the company and the placement cell.

Students are encouraged to make informed decisions considering their career goals, compensation packages, and other relevant factors.

Support Services

The placement cell provides ongoing support to students throughout the placement process, including guidance on negotiating offers and addressing any concerns or issues.

Confidentiality and Professionalism

Students are expected to maintain confidentiality regarding job offers and other placement-related information.

Professional conduct is required at all times during placement activities.

Value Added Programs Offered

- Certification in Additive Manufacturing
- Certification in AutoCAD in an Education Certification
- Certification in Basics of Artificial Intelligence
- Certification in CATIA V5
- Certification in COST-X
- Certification in Digital Media and Marketing
- Certification in Electrical Wiring and Servicing
- Certification in Emerging Trends in Electrical CADD and Automation
- Certification in English Communication Skills
- Certification in Gateway to Cyber Security
- Certification in Industry Oriented Selenium Using JAVA
- Certification in Introduction to MATLAB
- Certification in Introduction to Python
- Certification in IOT and Its Applications
- Certification in Model-Based Approach Using MATLAB and Simulink
- Certification in Modeling and Design
- Certification in MS Excel
- Certification in Object Oriented Programming Using C++
- Certification in Python & Machine Learning
- Certification in Revit Architecture
- Certification in SKETCH UP

Placement Statistics

Academic Year	2021-22
Highest CTC	9.0 LPA
Average CTC	3.51 LPA
Students Placed	156

Student Testimonials 2021-22

I'm grateful to the Placement Cell at Jain Institute of Technology for their dedication to helping students transition smoothly into the workforce

Bharath Kulkarni, CSE

Jain Institute of Technology's Placement Cell provided personalized career counseling that helped me identify and pursue my passion.

Arpitha R, CV

The Placement Cell at Jain Institute of Technology played a crucial role in shaping my career trajectory and facilitating job placements.

Ashwini T, EEE

I credit the Jain Institute of Technology Placement Cell for helping me land a job that aligns perfectly with my skills and interests.

Prathiba K L, EC

Thanks to the extensive network of recruiters established by Jain Institute of Technology's Placement Cell, I secured multiple job offer.

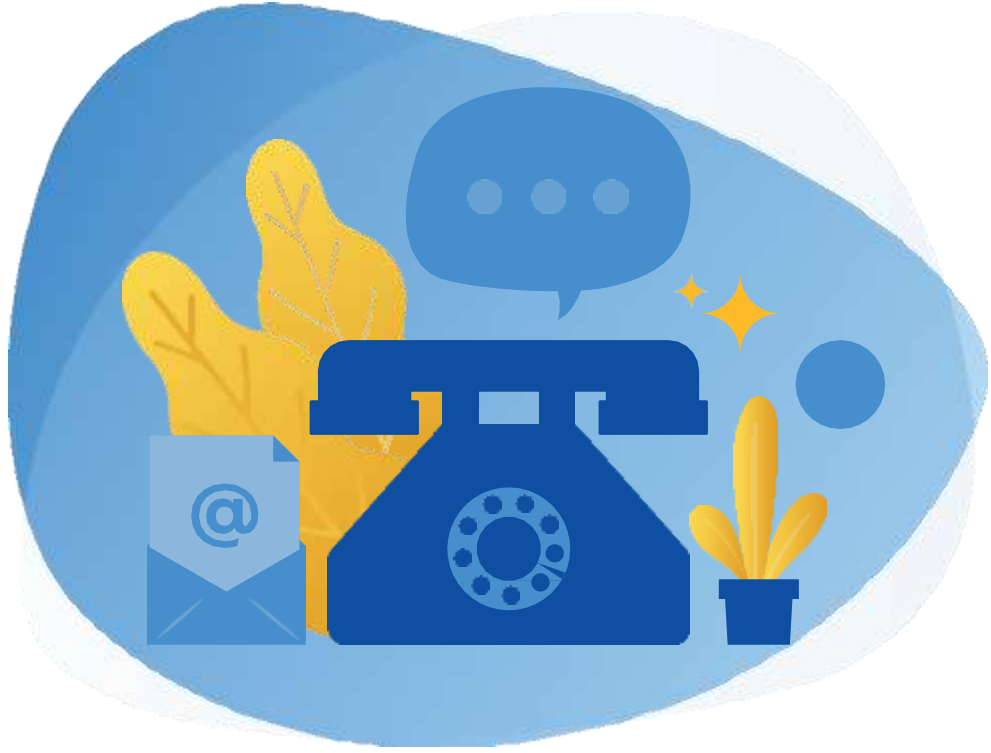
Naveen L, MBA

PROMINENT RECRUITERS

Internship Companies

 <p>TECHNOLOGICS</p>	 <p>Explore Expand Enrich</p>	 <p>Muthoot Finance</p>
	 <p>Driving Digital Design!</p>	 <p>Your Personal Trainer Aspires Aspires</p>
 <p>BUILDING LASTING RELATIONSHIPS</p>	 <p>Talent Solutions</p>	
		
 <p>A GLOWTOUCH COMPANY</p>	 <p>ACADEMY OF HIGHER EDUCATION</p>	 <p>PUTTING PEOPLE FIRST</p>
		 <p>Height your success</p>
 <p>ISO 9001:2008 Certified</p>	 <p>Innovative. Professional. Reliable.</p>	 <p>INFRASTRUCTURE DEVELOPERS LTD</p>
 <p>Commercial Vehicle Finance GETS YOU GOING</p>		



CONTACT US

Jain Institute of Technology

Training and Placement Cell

No-323, Near Veereshwara Punyashrama, Bada Cross,
Avaragere Village, Davangere 577003

08192-297002

Mob:9663868258