



Jain Institute of Technology, Davangere

(Affiliated to VTU, Belagavi)

Approved by AICTE, New Delhi and State Govt. DTE

TRAINING AND PLACEMENT CELL

BROCHURE - 2019-20



About JIT

Jain Institute of Technology is one of the best-developing engineering colleges of Davangere and is located adjacent to the Pune-Bangalore National Highway, which is 7 Kms from Davangere Railway Station. It has a lush green campus spread across 16 Acres of land, attached with lake-The college has excellent infrastructural facilities that include spacious classrooms attached with tutorial rooms & well-equipped laboratories, Workshops, Drawing halls, Seminar halls, Digital library, Staff rooms, Computer center, Browsing center with high speed internet connectivity, Girls common room, Boys common room, EDUSAT room, Canteen, Transportation and reprographic facility to the students, etc. The college has a team of well-experienced, dedicated faculty & strong student counseling system in which each student will be attended individually with special care in academics and other co-curricular activities.

About Training and Placement Cell

Training and Placement Cell is an integral part of our Institute. Training activities are organized throughout the year to prepare the students for the campus selection process. The cell is sensitized to function all throughout the year towards generating placement and training opportunities for the Students. The Placement Cell is headed by the Dean of Training & Placement and has a team of Placement coordinators from each department, well supported by the Placement trainers.

The Placement Cell aims to bridge the gap between academia and industry. We focus on industry-academic interface programs in collaboration with leading industries in various sectors. Jain Institute of Technology proudly boasts of providing our students with a wide range of Campus Recruitment Training programs aimed at enhancing their life skills, soft skills, employability skills, personality development, technical skills, out-of-the-box thinking, creativity, and innovativeness. The placement cell also initiates many curricular and extra-curricular activities to ignite their minds. Also, various career-orientating seminars and workshops are conducted, ultimately leading to campus placements. We make sure, the students imbibe the right attitude and skills to face the challenges in the Work Culture

Placement Policy

Eligibility Criteria

Students must meet minimum academic requirements and any additional criteria set by the recruiting organization.

Participation Guidelines:

All eligible students are encouraged to participate in placement activities.

Students must register with the placement cell and comply with all deadlines and procedures.

Preparation and Training

The institute provides career counseling, resume-building workshops, mock interviews, and other training programs to prepare students for placement activities.

Placement Process:

Companies interested in recruiting from the institute will be invited to conduct placement drives on campus.

The placement cell facilitates communication between students and recruiters, schedules interviews, and manages logistics.

Interviews and Selection

Students are required to attend all interviews for which they are shortlisted.

Selection criteria may vary by company and position, and final decisions are at the discretion of the recruiters.

Acceptance of Job Offers

Students are expected to accept job offers responsibly and communicate their decisions promptly to both the company and the placement cell.

Students are encouraged to make informed decisions considering their career goals, compensation packages, and other relevant factors.

Support Services

The placement cell provides ongoing support to students throughout the placement process, including guidance on negotiating offers and addressing any concerns or issues.

Confidentiality and Professionalism

Students are expected to maintain confidentiality regarding job offers and other placement-related information.

Professional conduct is required at all times during placement activities.

Value Added Programs offered

- Certification in Advanced Embedded System Design
- Certification in Advanced Image Processing
- Certification in AutoCAD
- Certification in AutoCAD 3D in association
- Certification in Consumer Behaviour
- Certification in Digital Manufacturing and Design
- Certification in Electrical System Design
- Certification in English Communication Skills
- Certification in Fire Safety Building Technology
- Certification in Frontiers of Computer Science
- Certification in Fundamentals of Automotive Systems
- Certification in Gateway to Cyber Security
- Certification in Introduction to Image Processing and Biometric Authentication
- Certification in Introduction to MATLAB
- Certification in JAVA Application Development with MySQL
- Certification in Modeling and Design
- Certification in Object Oriented Programming Using C++
- Certification in PRIMAVERA
- Certification in STAAD Pro
- Certification in VLSI Design
- Certification in Web Design

Placement Statistics

Academic Year	2018-19
Highest CTC	8.1LPA
Average CTC	2.6 LPA
Students Placed	376

Student Testimonials - 2018-19

I'm indebted to the Jain Institute of Technology Placement Cell for facilitating networking events that led to valuable professional connections.

Aishwarya O Patel, EEE

Thanks to the proactive efforts of the Placement Cell at the Jain Institute of Technology, I received multiple job offers in my desired field.

Akshatha S G, CSE

Jain Institute of Technology's Placement Cell went above and beyond to organize mock interviews, enhancing my confidence and interview skills."

Arpitha N R, EC

The comprehensive training programs offered by the Placement Cell at Jain Institute of Technology prepared me well for the corporate world

Chethan kumar K T, CE

Jain Institute of Technology's Placement Cell played a pivotal role in helping me transition from academia to a successful career

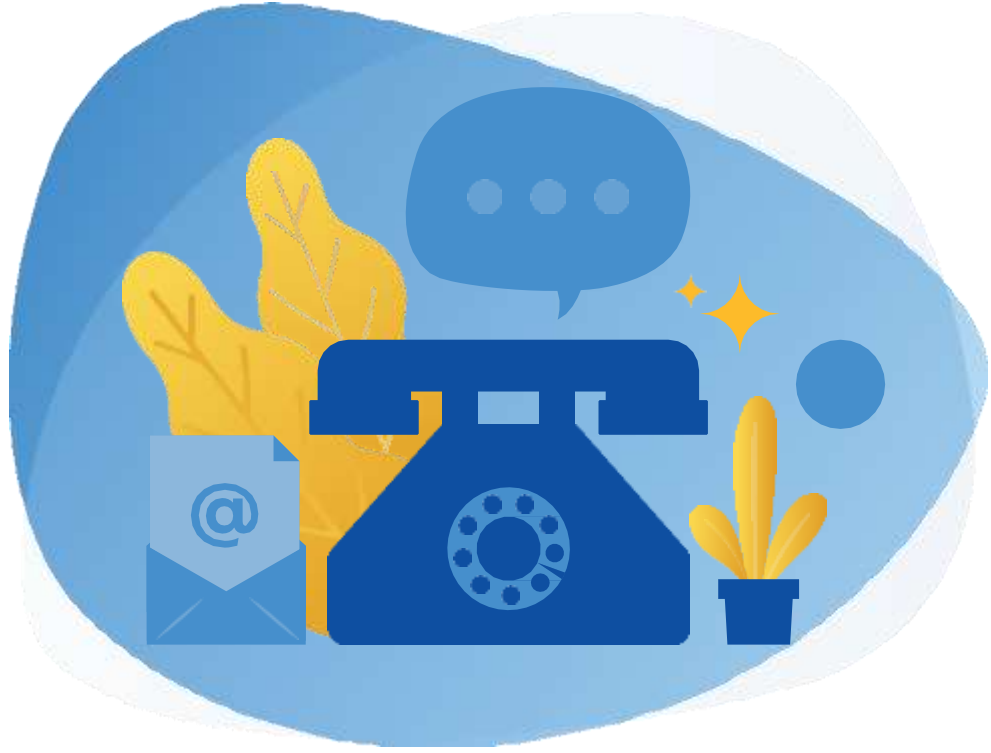
Darshan B V, ME

PROMINENT RECRUITERS

Internships companies

 <p>Muthoot Finance</p>	 <p>BYJU'S The Learning App</p>	 <p>AXIS BANK</p>
 <p>MANIPAL ACADEMY OF HIGHER EDUCATION</p>	 <p>RUBICON</p>	 <p>Spiders Velachery</p>
 <p>7 HILLS</p>	 <p>EDURapid Your Personal Trainer Anywhere Anytime</p>	 <p>SEVENTH SENSE Talent Solutions</p>
 <p>niva Health Insurance</p>	 <p>MOTILAL OSWAL Investment Services</p>	 <p>CLICKS CAMPUS</p>
 <p>TECHNOLOGICS</p>	 <p>ETHNUS Explore Expand Enrich</p>	 <p>GLOW TOUCH PUTTING PEOPLE FIRST</p>
 <p>Palle Technologies begin your success</p>	 <p>Siya s y s t e m s A GLOWTOUCH COMPANY</p>	 <p>AARBEE Innovative. Professional. Reliable.</p>
 <p>IRB INFRASTRUCTURE DEVELOPERS LTD</p>	 <p>SHRIRAM Commercial Vehicle Finance GETS YOU GOING</p>	 <p>AEGIS</p>



CONTACT US

Jain Institute of Technology

Training and Placement Cell

No-323, Near Veereshwara Punyashrama, Bada
Cross, Avaragere Village, Davangere 577003

08192-297002

Mob:9663868258